

/

2

/

”
37232.100.6

”

“ ”

204038438

48

48,

(e-mail):

:0888529579

I.

1.

) , , , , ; , ,

37232.100.6

25.07.2016 . – / 3814
28 24.11.2016 .

37232.100.6

2000”

“ ”

3422 15.08.2016 ., 106, II,

1645/16 .

1 / . 40 ()

1272/2008
(CLP),

(ECHA)

1

() 1907/2006
(REACH).

ECHA . 6

Дестилерия за етерични масла
Фирма "ПЕТЕЛ ГРУП" ООД
обл. Шумен

Разчети

Дестилерия 6x2,5м3

Врематраене на процеса

Зареждане	20	мин
Пропарване	20	мин
Дестилация	80	мин
Общо	120	мин

Макс. дестилационни цикли на ден(1 линия)	12	бр.
Реални дест. цикли (90%) натоварване (1 линия)	10	бр.
Брой дестилационни линии	6	бр.
Общ брой дестилационни цикли	60	бр.

Дебит на парата за дестилация (1 линия)	200	kg/h
Необходима пара за дест. цикъл (1 линия)	333	kg
Разход на пара на ден (За 40 цикъла)	20000	kg

Паропроизводителност на котела	1850	kg/h
Мощност на горелката	780	kW
Енергия за производство на пара	13000	kWh
Разход на дизелово гориво на ден	1300	ltr.
Обем на резервоара за диз. гориво	3000	ltr.

Разход на вода за произв на пара на ден	20000	ltr.
---	-------	------

Ел. мощност на инсталацията	15	kW
Разход на ел. енергия на ден	360	kWh

Работна ръка

Брой смени	3	
Брой хора в смяна	8	
Общо заети	24	

Кампания лавандула (дни)	20	дни
Кампания Маточина (дни)	40	дни
Кампания Бял равнец (дни)	20	дни

3, „”
.93, .1, .1 .2

, , 1917 17.04.2018 .²

) / ;

25.07.2016 . „ 3814
”

37232.100.6 . , . „’
2534 . :,, , ,

) , , ;

, , : ;
); ; (; ; -

; ; .
- .
, .
, - .
- .

1.8-2.0 . ,

) - , ;

➤ 20 03 01 - " " - " 3-5

➤ 17 04 05 - „ ” - 120

(, , , , ,)

()

- 02 05 01 ,
- 02 05 99 ,

() ,

-
- 40 / ()
 - - 30 / ()
 - - 20 / ()

5³

()

)

(), ...

)

;

/

,

)

§ 1, .12

"



,

;

,



,

—

,

;

—

”

”

1400

320 . 1700 .

➤ ;

➤ ;

➤ ;

➤ ;

➤ ;

1400

320 .

1700 .

➤ ;

➤ ;

2.

37232.100.6

2534 . .

2000”

100

3.

(), , 3

.)

1.8-2.0

/ 40 () 1272/2008 1
(CLP),
(ECHA)

1 () 1907/2006 ECHA .6
(REACH).

4.

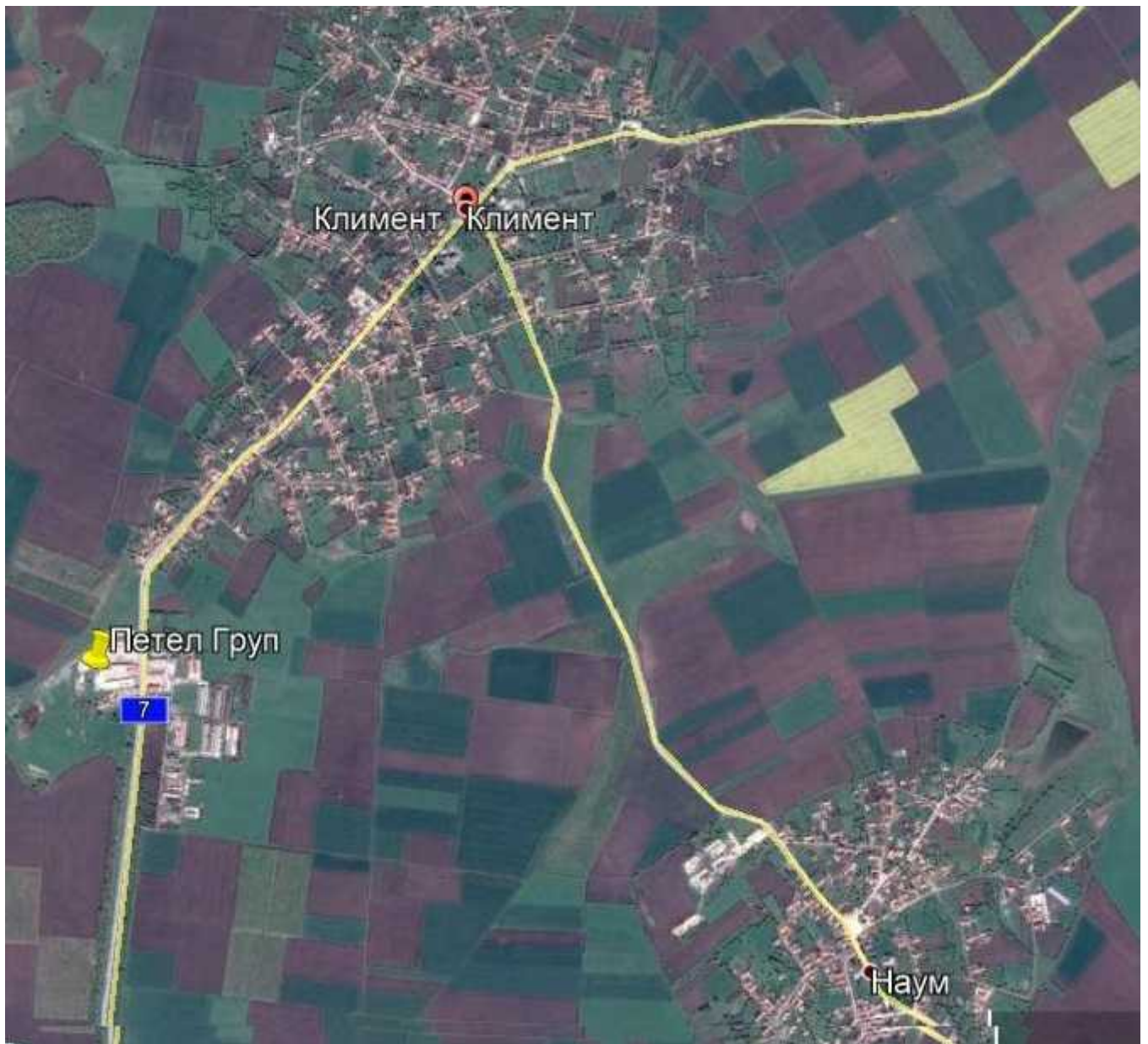
5.

6.

7.

，
。
-
，
“ “
，
。
70%
-
- 18 - 20 ， - 18 ， - 45 - 47 ，
- 2 - 3 ， - 30 ，
5 10 。
：
， ， ，
， ， ，
。
：
， ， ， ， ，
， ，
。
8. ， ， ， ， ，
- ， ，
- “ ” - 1400 ，
- 320 ，
- 1700 。





9.

10.

• 2000.

• 91/676/

• 91/271/

„ ” BG 0000106 ,

13,500 .

11. , (, ,) .

25.07.2016 . „ 3814 37232.100.6 2534 : „ ” .

12. , .

1) 2001 . , .54 16 2010 .); (. , .1 2

- 2) 2003 ., . . , .63 13 2010 .); (. . , .86 30
- 3) 2002 ., . . , .61 6 2010 .); (. . , .91 25
- 4) .124 23 1997 ., . . , .12 12 2010 .); (. . ,
- 5) 1999 ., . . , .82 16 2009 .). (. . , .84 24

- 1) 9 16.03.2001 .
- (. . , .30 28.03.2001 .);

III.

1.

2.

3.

4.

5.

93

60

5

6.

;

0000106

BG

BG0000106

92/42/

2000,

36756,7004

E 27.321

N 43.855

BG32

BG33

6110 *

Alyso-Sedion albi

Rupicolous calcareous or basophilic grasslands of the Alyso-Sedion albi

6210 *

(Festuco-

Brometalia) (*

) Semi-natural dry grasslands and scrubland

facies on calcareous substrates (Festuco Brometalia)(*important orchid sites)

6240 *

Sub-continental steppic grasslands

6250 * Pannonic loess steppic grasslands
 8310 Caves not open to the public
 91G0 * Quercus petraea Carpinus betulus Pannonic woods with Quercus
 petraea and Carpinus betulus
 91H0 * Quercus pubescens Pannonian woods with Quercus pubescens
 91I0 * - Quercus spp. Euro-Siberian steppic woods with Quercus
 spp. 91M0 - - Pannonian-Balkan turkey oak-sessile
 oak forests 91Z0 Moesian silver lime woods

:

Barbastella barbastellus

* Canis lupus

() Mesocricetus newtoni

Miniopterus schreibersi

Mustela eversmannii

Myotis blythii

Myotis capaccinii

Myotis emarginatus

Myotis myotis

Rhinolophus blasii

Rhinolophus euryale

Rhinolophus ferrumequinum

Ma Rhinolophus hipposideros

Rhinolophus mehelyi

Spermophilus citellus

Vormela peregusna

:

Elaphe quatuorlineata

Emys orbicularis

Testudo graeca

Testudo hermanni

Triturus dobrogicus

:

Rhodeus sericeus amarus

:

Coenagrion ornatum

Hypodryas maturna

Lycaena dispar

Cerambyx cerdo

Lucanus cervus
Morimus funereus
* Callimorpha quadripunctaria
Rosalia alpina

:

e Potentilla emilii-popii
Himantoglossum caprinum
Echium russicum

Species referred to in Article 4 of Directive 2009/147/EC and listed in Annex II of Directive 92/43/EEC and site evaluation for them

, 4 2009/147 / II
2009/147 / 92/43 /

1308 Barbastella barbastellus p 172 268 i P G C B C B M
1352 Canis lupus p 1 2 i G C A C A I
1088 Cerambyx cerdo p R C B C A I
4045 Coenagrion ornatum p 2 2 localities R G C B C B P
4067 Echium russicum p R DD C B C B R
5194 Elaphe sauromates p localities P DD C A C A R
1220 Emys orbicularis p localities P DD C A C B I
6169 Euphydryas maturna p R A A A A I
6199 Euplagia quadripunctaria p 18677 37890 i R P C A C A P
2327 Himantoglossum caprinum p P DD C C A C I
1083 Lucanus cervus p R C B C A M

1355 Lutra lutra p 1 2 i G C C C C I
1060 Lycaena dispar p R B A A A M
2609 Mesocricetus newtoni p V C B C B M
1310 Miniopterus schreibersii p 101 250 i C M C B C C I
1089 Morimus funereus p R C B C A M
2633 Mustela eversmannii p R B A B A M
1323 Myotis bechsteinii p 151 303 i C G C B C B M
1307 Myotis blythii p 101 250 i C M C B C B M
1316 Myotis capaccinii p 51 100 i P M C B B B M
1321 Myotis emarginatus p 11 50 i P M C B C B M
1324 Myotis myotis p 51 100 i C M C B C B P
2125 Potentilla emilii- popii p 4000 6000 i G A A C A M
1305 Rhinolophus euryale p 51 100 i P M C B C B M
1304 Rhinolophus ferrumequinum p 101 250 i C M C B C B M
1303 Rhinolophus hipposideros p 51 100 i C M C B C C M
1302 Rhinolophus mehelyi p 51 100 i C M C C B C F

1134 *Rhodeus sericeus amarus* p P D I
1087 *Rosalia alpina* p R C B C A M
1335 *Spermophilus citellus* p C C A C A R
1219 *Testudo graeca* p 5 5 localities R M C A C A R
1217 *Testudo hermanni* p 2 2 localities V P C A B A A
1993 *Triturus dobrogicus* p localities P DD C C C C M
2635 *Vormela peregusna*

Other important species of flora and fauna (optional)

R *Ablepharus kitaibelii* R X
I *Aedia leucomelas* R X
A *Bufo viridis* C X
P *Cephalanthera damasonium* R X
I *Chilodes maritima* V X
I *Cilix asiatica* V X
R *Coluber caspius* C X
R *Coronella austriaca* V X
I *Cryphia amasina* R X
I *Cucullia scopariae* V X
P *Cyclamen coum* R X
P *Cyclamen hederifolium* R X
I *Cyclophora annularia* R X
I *Diachrysia nadeja* V X
I *Diachrysia stenochrysis* R X
P *Discotis venosa* C X
R *Elaphe longissima* C X
M *Eptesicus serotinus* C X
M *Erinaceus concolor* C X
I *Euxoa cos cos* R X
P *Galanthus nivalis* C X
P *Galium rubioides* R X
P *Goniolimon collinum* X
I *Heliothis maritima bulgarica* C X
P *Helvella atra* R X
A *Hyla arborea* C X
M *Hypsugo savii* C X
I *Idaea muricata* R X
R *Lacerta trilineata* R X
R *Lacerta viridis* C X
P *Limonium vulgare* X
M *Mustela nivalis* C X
R *Natrix tessellata* R X

I Noctua tirrenica R X
 M Nyctalus leisleri C X
 M Nyctalus noctula C X
 I Onconotus servillei R X
 I Pelosia obtusa R X
 M Pipistrellus pygmaeus C X
 M Pipistrellus pygmaeus R X
 M Plecotus austriacus C X
 R Podarcis muralis R X
 R Podarcis taurica R X
 I Polypogon plumigeralis R X
 P Tricholoma acerbum R X
 P Vicia pisiformis V
 R Vipera ammodyte

13,500 .

7.

, ,
 , ,
 ,
 ,
 , 60,14 , 0,20%
 й, 41,90
 29,61 , 8,95
 45.85 .
 - ,
 ,
 43 .
 451,577 .
 -
 ,
 / /
 , , - , , ,
 66,94% , 19 643,07 .
 , 70%
 4 . / 2014 . 174 . ,
 6639,03 , 22,62%.
 ,
 , - .
 ,

73,14 ,

152,00 .

14

567

1573 .

(1934 .)

27.10.1950 .

днес се е запазила само частично поради изсичането ѝ за огрев.

8.

/

1400

320 .

1700 .

IV.

:

1.

-
-
-

320

1028

2011

2

1994

-07-2 16

2009

I .27

15-25%

4-5 7-8

1942 27.4 100 22,6
 +38,8
 20 15
 55-77%.

2010 - 32 774 117 80
 2010 2010 - 23.05.2010 - 48.0
 1 90 29,3

2,2 / 56% 30-40 /

()

.6

“

)

8 20 /

0.100 / . 1.3 / . , 11

12 2/

”

:

- . 129.89
- . 38.37
- . 120.33
- . 17.0

,
,

,

BG1DJ100R008.

BGTR10 (2009 .) –
BG1DU100R001 -

()

:

BG2PR600R014 (. . .).

.119 , .1, .3

()

2010 – 2015 .

930/25.10.2010 .

←

970/28.07.200 .

:

” . ,

“ , ”

“ . ,

10 000

(. .),

6 9 2000 .

() ,

• , " BG2G000 1hb036, -NO3; ; ().

• BG2G000J3K1041, ;

()

" " 48%.

20

5 30

200

2534

∴
-
,
.
.
,
.
.

∴
.
.
.
,
.
-
.
.
.
.

.
,
.
.
,
.
-
.

(), - , ∴
,

-3 7

125

7

1,5-2,0

K1h –

30-100 .

/ -

/rzK1b,a

0.5 24 , 5-15 .

Aestilignosa.

- Quercus pedunculiflora
- Amygdalus

/ 1V –

/sp

60-70 .

3

Aestilignosa.

- Quercus robur

-2°

24°

450 550 mm

(, 1997),

form. (*Querceta certis*),

- *Quercus cerris*, campestre.
- *Querceta dalechampii*
- *Carpinus betulus*, (form.
- *Quercus dalechampii*,
- *Acer campestre*.
- *Amorpha finticosa*
- *Eleagnus angiistifolia*,
- *Stipa lesingiana*,
- *Silene moldavica*,
- *Astragalus cornutus*,
- *Linum pallasianum*,
- *Spirea crenata*
- *Sysimbrium polymotphum*.
- *Caragana frutex*
- *Achillea leptophylla*.

- *Serratula bulgarica*.
Thalictrum aquilegifolium ssp. *storgosiacum*,
- *Trifolium medium* ssp. *skorpilii*, - *Opopanax*
chironium ssp. *bulgaricum*, - *Onosma thracica*, -
Veronica krumovii, - *Jurinea bulgarica*, -
Carduus thracicus, - - *Colchicum davi-* *dovii* - *Tulipa*
urumoffii.
, ,
, ,
- *Carpinus orientalis* - *Fraxinus ornus*.
(forni. *Carpineta orientalis*).
-
Quercus cerris - *Quercus frainetto*.
, , ,
- -
- *Quercus dalechampii* -
Carpinus orientalis. -
- *Carpinus orientalis*.
- *Fagus* - *siaca*,
- *Tilia tomentosa*, - *Carpinus betulus*, -
Quercus dalechampii - *Acer campestre*.
- *Quercus pubescens*
- *Quercus virgiliana*.
, ,
(form. *Aesculeta hippocastani*),
-
- *Cereis siliquastrum*.
- *Carpinus*
betulus - *Carpinus orientalis*,
(form. *Tilieta tomentosae*).
, (form. *Fageta moesiaca*).
, ,
(form. *Querceta dalechampii*) - (form. *Querceto-Carpineta*
betuli).
, ,
(form. *Amygdaleta nanae*) (form.
Paliureta spina-christi).
, (form. *Artemisieta albae*),
(form. *Agropireta brandsae*) (form. *Brometa erectii*).
, ,
(form. *Dichantieta ischaemi*), (form. *Poeta*
bulbosae) (form. *Chrysopogoneta grylli*).
, ,
, -

(Trifolium pratense) (Trifolium repens L.),
 (Alopecurus pratensis), (Bromus arvensis), (Stippa capillata)
 (Agropyrum repens), (Limnanthes alba), (Agrostis tenuis)
 : - (Achillea collina),
 (Agrimonia eupatoria), (Alchemilla vulgaris), (Anthemis
 tinctoria), (Arum Maculatum), (Asarum europaeum),
 (Astragalus glycyphyllos), (Atropa bella - donna), (Bellis perennis),
 (Betonica officinalis), (Bistorta major), (Carlina acanthifolia),
 (Cetraria islandica), (Chelidonium majus),
 (Chenopodium bonus - henricus), (Cichorium intybus), (Colchicum
 autumnale), (Cornus mas), (Corylus avellana),
 (Crataegus monogyna), (Cuscuta europaea), (Cynoglossum
 officinale), (Dryopteris filix mas), (Eryngium campestre),
 (Erysimum diffusum), (Euphrasia - species diversa), (Filipendula
 ulmaria), (Fragaria vesca), (Galeopsis tetrachit), (Galium
 odoratum), (Genista tinctoria), (Gentiana cruciata),
 (Geranium macrorrhizum), (Geranium robertianum),
 (Geranium sanguineum), (Geum urbanum),
 (Helleborus odorus), (Heracleum sibiricum), (Herniaria
 glabra), (Herniaria hirsuta), (Hieracium pilosella),
 (Hypericum perforatum), (Leonurus cardiaca),
 (Mentha spicata), (Ononis arvensis), (Ononis arvensis),
 (Origanum vulgare), (Petasites hybridus),
 (Plantago lanceolata), (Plantago major), (Polygala
 major), (Polygonum aviculare), (Polypodium vulgare),
 (Populus tremula), (Potentilla reptans), (Primula veris),
 (Prunus spinosa), (Pteridium aquilinum),
 (Pulmonaria officinalis), (Rosa canina), (Rubus idaeus),
 (Rumex acetosa), (Rumex acetosella),
 (Rumex alpinus), (Salix purpurea), (Sanicula europaea),
 (Scrophularia nodosa), (Solidago virgaurea), (Sorbus aucuparia),
 (Tanacetum vulgare), (Teucrium chamaedrys), (Tussilago
 farfara), (Veratrum album), (Verbascum thapsiforme),
 (Verbascum phlomoides), (Veronika officinalis), (Viola
 tricolor), (Viscum album), (Urtica dioica),
 (Solarium nigrum), (Solanum dulcamara), (Morus alba),
 (Fraxinus americana), (Cannabis sp.), (Amorpha fruticosa),
 (Sambucus ebulus), (Malus domestica), (Conium maculatum),
 (Amaranthus blitum), (Cynodon dactylon), (Convolvulus
 arvensis)

, , , .
 19 643,07 . 66,94% ,
 , 6639,03 , 22,62%.
 , , -115/13.02.2015 .
 - 6 -
 : /
 (Quercus cerris), (Carpinus betulus),
 , /
 (Quercus petraea), (Pinus nigra),
 (Quercus rubra), (Tilia tomentosa), (Robinia
 Pseudoacacia), (Fraxinus angustifolia), -
 : (Crataegus monogyna), (Corylus avellana),
 (Quercus frainetto Ten.)
 ,
 , -
 , -
 ,
 (Tilia tomentosa), (Platanus acerifolia), (Thuja
 orientalis), (Laurocerasus officinalis), (Euonymus japonicus),
 (Acer pseudoplatanus), (Catalpa bignonioides), (Ginkgo biloba),
 (Aesculus hippocastanum) (Sophora japonica).

(- Ciliophom), (- Oligochaeta),
 (- Ephe(meroptera), (- Plecoptera), (- Coleoptera),
 (- Trichopterid) (- Diptera).
 Insecta).
 meridionalis, Platycnemis pennipes Aeshna affinis, : Callopteryx virgo
 (- Mantodea); - Ameles heldreichi
 Orthoptera); - Bradypoms dasypus (-
 - Eurybregma nigrolineata .
 (- Coleoptera),
 , - Chrysolina graminis, Ch. staphylea Phratora vulgatissima,
 - Pachyta quadrimaculata, Acmaeops pratensis, Anoplodera nifipes, Necydalis major,
 - Brachyleptura tesserula Vadonia imitatrix.
 - Calosoma sycophanta. (-
 Hymenoptera),
 - Messor structor, - Liometopum
 microcephahim Formica cinerea,
 , - Monomorium pharaonis.
 (. Ichneumonidae, Hymenoptera) - Scambus elegans
 () Tromatobia ornata ().
 (- Lepidoptera) - Parnassius apollo
 - Colias hyale, Lopinga achine achine Melitaea arduinna
 Hesperioidea, Papilionoidea (, 1999).
 - Pelobates fuscus, - Hyla arborea
 - Rana dalmatina.
 - Testudo graeca, - Testudo hermanni,
 - Podarcis taurica, - Coluber caspius, - Elaphe
 quatuorlineata sauromates, - Coronella austriaca - Vipera
 ammodytes.
 ,
 ,
 ,
 ,
 ,
 150 .
 - Tadorna ferrug-inea, - Neophoron percnopterus,
 - Circaetus gallicus, - Buteo rufinus, - Aquila
 pomarina - Bubo bubo.
 , - Ciconia nigra, - Falco cherrug,
 - Falco naumanni, - Falco vespertinus -
 Aquila chiysaetus.
 ,
 ,
 ,
 - Insectivora, - Erinaceus concolor,
 - Crocidura leucodon, - Rhinolophus ferrum-
 equinum, - Rhinolophus hipposideros - Rhinolophus
 euriale. - Cricetus cricetus, - Mesocricetus
 newtoni, - Microtus arvalis - Mus spicilegus.
 - Carnivora - Canis lupus,
 - Canis aureus, - Vulpes vulpes,

- Nyctereutes procyonoides, - Meles meles, - Lutra lutra, - Morte
 martes, - Mustela eversmanni - Felis silvestris -
 (Chordata, Vertebrata),
 (Cervus elaphus L), (Capreolus capreolus), (Sus scrofa), (Felis
 silvestris), (Glis glis), (Sylvaemus sylvaticus),
 (Sciurus vulgaris), (Canis lupus), (Dryomys nitedula),
 (Martes foina), (Glis glis), (Canis mesomelas), (Vulpes vulpes),
 (Vormela peregusna), (Meles meles), (Lutra lutra).
 (Carassius gibelio), (Cyprinus carpio) (Chalcalburnus chalcoides),
 molitrix). (Hypophthalmichthys

2.

，
 ·
 ， -
 ，
 “ ”
 ，
 ，
 ·

3.

，
 /
 ·
 ，
 ，

4.

(， ， ， ，
 ， - ， ，
).

·
 - ， ；
 - ；
 - ；

5.

； (， - ， ， ；
 ， ，).

6.

， ， ·
 ， ， ， ，
 ，
 ()

7.

8.

9.

10.

11.



➤

➤

➤

➤

➤

➤

➤

V.

.4

"

"